



Talent Insights Report

Project, Engineer and Design Insights



About Us

For over four decades, Jonathan Lee Recruitment has been working in partnership with our clients, ranging from start-ups and SMEs to large corporates both in the UK and overseas.

Our mission is to deliver solutions that help people to succeed and organisations to flourish, contributing to a better future for everyone.

Our passionate, experienced team provides world-class permanent, contract and interim recruitment solutions supporting a wide range of roles.

With **over 85% repeat business** annually, we build relationships for the long-term.

What to expect

Within this Talent Insights Report, we have utilised our technology-based solutions to provide you with up-to-date, real-world data, focusing on Project, Engineer and Design roles within Hydrogen associated industries.

The insights provided are collated from LinkedIn and Glassdoor, as well as from proprietary data and our experienced recruitment teams.

These insights are accurate as of October 2024. We hope you find this information of interest.

If you would like to discuss further or have any queries please contact the team at website@jonlee.co.uk.

Talent Pool Insights

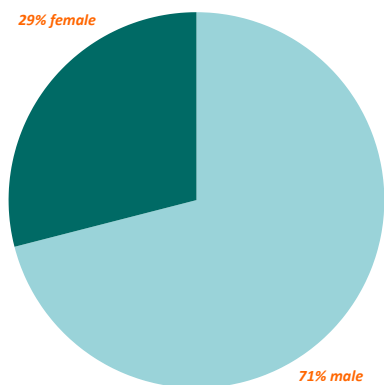
There were **45,395** of these professionals in the UK on LinkedIn. London was the top location in which they were based, followed by Cambridge and Manchester.

Walton-On-Thames, Wilmslow, and Leatherhead were all among the largest growth areas year-on-year in which these professionals were based.

The total number of professionals within this talent pool increased by **10%** in the last 12 months.



29% female



71% male

The gender diversity split of these professionals was **71% male** and **29% female**.

6,344 of the **45,395** had changed jobs in the last year.

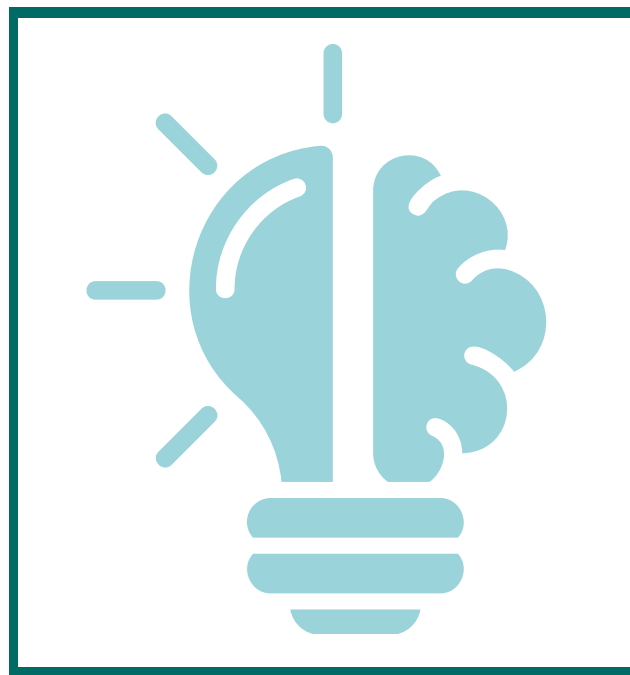
30% attained a **Bachelor's or Associate's Degree** and **41%** attained a **Master's Degree** as their highest level of education.

Based on the data found on LinkedIn the median tenure for these professionals was **1.6 years**. There were also **994 active job posts** for these roles advertised on LinkedIn as at 31 October 2024.

Skills Insights

According to our findings, the skills claimed by these **45,395** professionals were varied and wide-ranging. The following were among the top 20 common skills:

- 13%** Engineering
- 12%** Data Analysis
- 12%** Computer Simulations
- 11%** Python (Programming Language)
- 11%** Thermal Engineering
- 10%** Bioengineering
- 10%** Modelling
- 9%** Chemistry



Some of the fastest growing skills are listed below showing the percentage change in the number of professionals with this skill, compared to one year prior:

- 225%** Engineering Analysis
- 225%** Cost Engineering
- 213%** Plastics Engineering
- 150%** Software Quality

Midstream, Mobile Services, Fossil Fuel, Electric Utilities Management and Application Deployment were also among the fastest growing skills among this talent.

Salary Averages

Below we outline the average salary ranges for a number of jobs within the United Kingdom.

Job Title	Pay Range
Design Engineer	£55,200 - £74,400
Project Engineer	£46,800 - £62,400
Project Manager	£43,200 - £68,400
System Engineer	£43,200 - £69,600
Testing Engineer	£42,000 - £67,200
Research and Development Specialist	£39,600 - £68,400
Mechanical Engineer	£36,000 - £52,800
Electrical Engineer	£36,000 - £51,600
Process Engineer	£34,800 - £52,800
Chemical Engineer	£32,400 - £56,400

Jonathan Lee Recruitment Energy Team

When you partner with Jonathan Lee Recruitment, finding the perfect candidates for your job openings becomes hassle-free. Our dedicated and experienced team of recruitment professionals is committed to delivering a focused and tailored service, saving you time and resources whilst identifying the best talent for your business.

If you would like any specific insights to help with your recruitment plans or talent management activities, we would be delighted to discuss how we can support you. Please get in touch: E: website@jonlee.co.uk | T: 01384 397555