

Artificial Intelligence

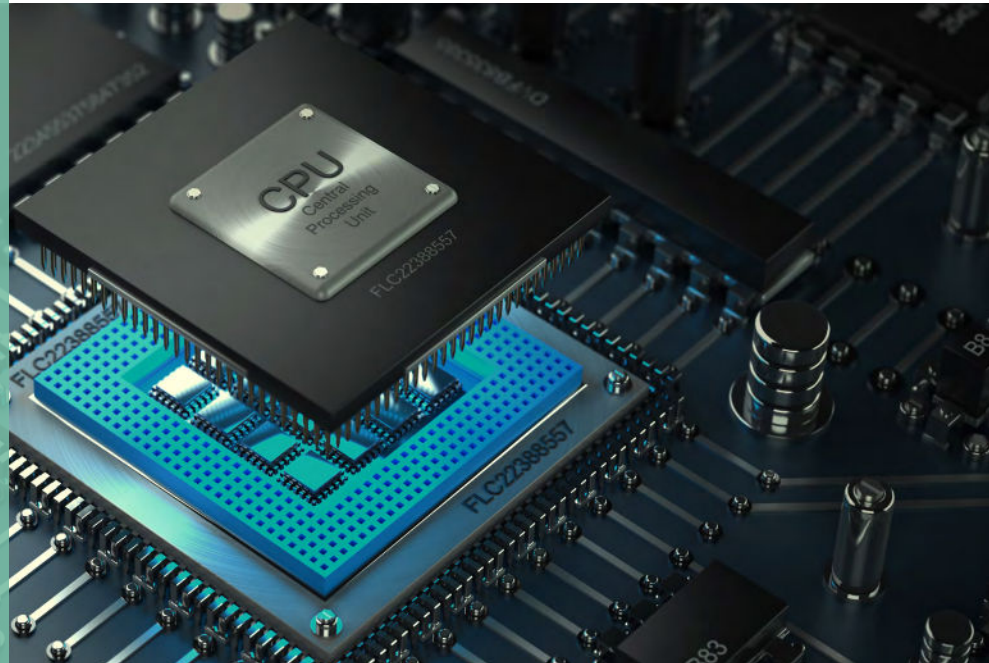
Automation & Controls

Electrification

Electronics & Embedded

IT & Cyber Security

Software & Data Science



Advanced Technology
recruitment

Jonathan Lee Recruitment

Who we are

For over 45 years, Jonathan Lee Recruitment has been providing exceptional people and a premier service to the technology, engineering and manufacturing sectors globally.

Our specialist team of technical and industry professionals offer a consultative approach bringing an in-depth understanding of the skills, experience and personal attributes required for a variety of roles from entry-level graduate positions to executive and board-level appointments.

Our suite of services has evolved to address any resourcing challenge a client may face, covering permanent and contract recruitment, interim management, search & selection, managed services, talent management solutions and design services.

With over 85% repeat business annually, we build relationships for the long-term, committing to continuous improvement, working closely with industry partners and professional bodies to support our candidates, clients and the wider market.



"Jonathan Lee Recruitment was born over 45 years ago out of my personal passion for engineering and an understanding of the importance of a strong innovative manufacturing sector to the UK economy."

"We have strived to establish and maintain a supportive, teamworking culture where the customer comes first and where honesty, integrity, professionalism, knowledge and empathy lie at the heart of everything we do."

Jonathan Lee - Chairman

What we can do for you

We offer permanent, interim and contract recruitment services for the various sectors that make up the advanced technology industry, including:

Artificial Intelligence



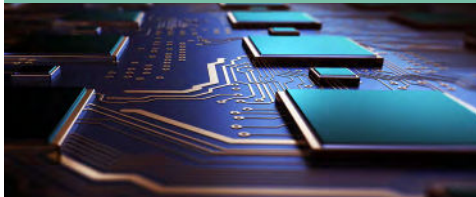
Automation & Controls



Electrification



Electronics & Embedded



IT & Cyber Security



Software & Data Science



Artificial Intelligence



Artificial Intelligence (AI) is the emerging technological trend, with talent in high demand as companies look for a competitive edge. Future tech also requires creative minds, for everything from augmented/virtual reality and artificial intelligence/machine learning.

Jonathan Lee Recruitment is here to help. Recruiting for roles within: Python, C++, R, Java, machine learning, computer vision, image processing, generative AI design, UNIX, signal processing, algorithm design & development, probability & statistics.

Working in partnership with our global client base, who range from high-tech start-up businesses to leading global manufacturers of bespoke machinery, automated system integrators, end of line packaging machinery providers, automated assemblers, robotic welders and equipment dispensers, we are committed to a culture of continuous improvement, providing clients with world-class recruitment services to keep us at the forefront of industry technological developments.

As many of our consultants come from relevant industry backgrounds including defence, IT, electronics, engineering and manufacturing, we pride ourselves on our in-depth understanding of the constantly changing AI landscape.

For more information on our artificial intelligence recruitment services visit:
www.jonlee.co.uk/artificial-intelligence

Automation & Controls



With a surge in manufacturing output and revolutionary developments within the industry, automated solutions can be the key to maintaining a competitive advantage.

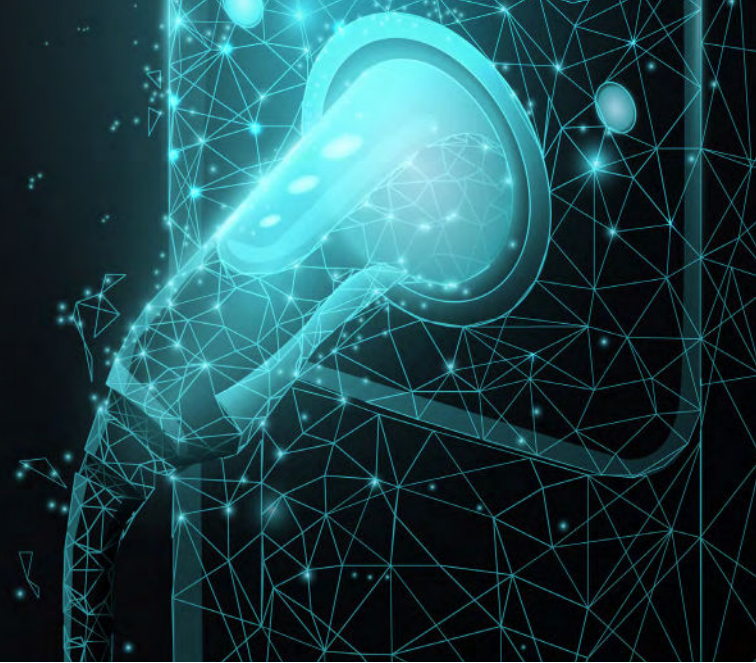
The first choice for clients and candidates, our automation and controls division provides clients with a unique level of expertise in contract, interim and permanent recruitment supporting industries that include: special purpose machines, automated warehousing and logistics, controls and research & development.

Our client base is global, ranging from high-tech start-up businesses to leading global manufacturers of bespoke machinery, automated system integrators, end of line packaging machinery providers, automated assemblers, robotic welders and equipment dispensers.

We are uniquely equipped with an in-depth understanding of the skills, experience and personal attributes required for a wide range of specialist automation and robotics, technical, supply chain and commercial roles.

For more information on our automation & controls recruitment services visit: www.jonlee.co.uk/automation-and-controls

Electrification



We are moving rapidly towards a more electrified world, driven by new innovations, rising customer expectations and Government ambitions.

Demand is growing for faster charging, longer-lasting, smaller, more stable, less weighty battery technology - whether that be to power a 300+ mile journey or to increase a smartphone's battery life to more than one day.

A new skills mix is now required to fuel the workforce of many companies. Specialists in electric machines, electric drives, battery development, control engineering and alternative propulsion technology (e.g. fuel cells) are required in increasing numbers.

Throughout the whole of the supply chain, companies are developing new products and processes to support the move towards electrification. Jonathan Lee Recruitment have a team of technology experts supporting our clients to source the candidates with the skills, experience and personal attributes required for these specialist roles.

Our consultants are experts in the field of electrification with years of experience giving them an in-depth and unrivalled understanding of the constantly evolving electrification landscape and the skills, experience and personal attributes required for specialist roles.

For more information on our electrification recruitment services visit:
www.jonlee.co.uk/electrification



Electronics & Embedded

The growing variety and complexity of electronics, coupled with rapid technological change, shorter product lifecycles and a drive for greener energy have all contributed to significantly increased demand for highly skilled engineers across all sectors.

Working in partnership with our global clients including SMEs, manufacturing companies, defence and intelligence agencies, Jonathan Lee Recruitment specialises in recruiting tech talent in embedded and electronics engineering across sectors.

Our team of expert consultants have years of experience working within and recruiting for electronics & embedded roles meaning that they specialise in recruiting for a variety of industries and applications including: medical devices, automotive, defence, manufacturing, telecoms, broadcast/connected TV, IoT, AI, machine learning, smart meters, wearable technologies, semiconductor, cryptographic communications, high integrity systems, UAV/autonomous vehicles, electric vehicles, robotics and solid-state drives.

For more information on our electronics & embedded recruitment services visit: www.jonlee.co.uk/electronics-and-embedded



IT & Cyber Security

With the emergence of IoT, web-based businesses and Industry 4.0, we are seeing evermore complex and secure systems, networks and infrastructures including cloud, hosted, ITIL and secure environments, which all require a working knowledge of cyber security frameworks such as ISO 27001 or JSP 440.

The rise in cyber threats, cyber attacks and the need for data security is driving longer-term investment in cyber security solutions including innovative recruitment services across business, government and domestic environments, which we are uniquely equipped to provide.

Jonathan Lee Recruitment's team of IT and cyber security recruitment specialists offer clients an unrivalled level of expertise in contract, permanent and executive recruitment across IT, security, protection and defence industries.

Recruiting for roles within: IT and network infrastructure, remote support, deskside support, penetration testing, information security, ERP/SAP engineering or analysing, ISO 27001 auditing, automation process development, IT project management, cyber security, threat detection or protection, homeland security, counter terrorism and surveillance technology.

For more information on our IT & cyber security recruitment services visit:
www.jonlee.co.uk/it-and-cyber-security



Software & Data Science

The continued pace of advanced technological breakthroughs across industries has meant the need for software engineers and developers is rising rapidly and looks set to continue as the global tech demand continues to gather pace.

Working in partnership with our global clients including SMEs, manufacturing companies, governments, law enforcement, defence and intelligence agencies, major retail start-ups, our passionate team provides world-class recruitment support for permanent, contract, and interim software positions across various sectors.

Our software consultants come from a wide range of industries: defence, IT, electronics, engineering and manufacturing, finance, research & development, meaning they have the skills and experience to match the right people with the right job.

For more information on our software & data science recruitment services visit:
www.jonlee.co.uk/software-and-data-science

Our commitment to you

Jonathan Lee Recruitment is committed to delivering best-in-class recruitment and talent management services. Taking the time to understand your business needs and priorities, we adopt a partnership approach to help achieve your talent acquisition plans.

We present only the most relevant candidates, taking into account the softer issues of recruitment; providing skills, personality and cultural fit. You will benefit from the latest initiatives in recruitment, digital media and candidate attraction.

Whether you are seeking to recruit one key individual or an entire team, our expert consultants, administrators and welfare support resource provide a dedicated, personalised and premier service.

For more information or to talk to a member of our recruitment team:

✉ clientenquiries@jonlee.co.uk

☎ 01384 397 555



Additional services

INTERIMMANAGEMENT

jonlee.co.uk/interims

Delivering high calibre interims in
the engineering, manufacturing
and technical sectors to meet a
wide range of business challenges

DESIGNSERVICES

jonlee.co.uk/design-services

Providing our clients with digital design services, prototyping solutions and full management of turnkey projects

SEARCH&SELECTION

jonlee.co.uk/search-selection

Conducting exclusive and retained search assignments in the industrial and technical sectors to deliver executive, director and board-level appointments

MANAGEDSERVICES

jonlee.co.uk/managed-services

Providing flexible service-level agreements and bespoke processes, tailored to your business needs



STOURBRIDGE OFFICE

The Maltings, Mount Road,
Stourbridge, West Midlands DY8 1HZ
+44 (0)1384 397 555
clientenquiries@jonlee.co.uk



SHROPSHIRE OFFICE

Midlands Agri-Tech Innovation Hub,
Poultry Drive, Edgmond, Newport, TF10 8JZ
+44 (0)1952 987 032
clientenquiries@jonlee.co.uk



WARWICK OFFICE

Cedar Barn, Hatton Technology Park,
Warwick, Warwickshire, CV35 8XB
+44 (0)1926 679 505
clientenquiries@jonlee.co.uk

BE SOCIAL



www.jonlee.co.uk

clientenquiries@jonlee.co.uk

SOLUTIONS THROUGH
UNDERSTANDING



JL 014 036_R2